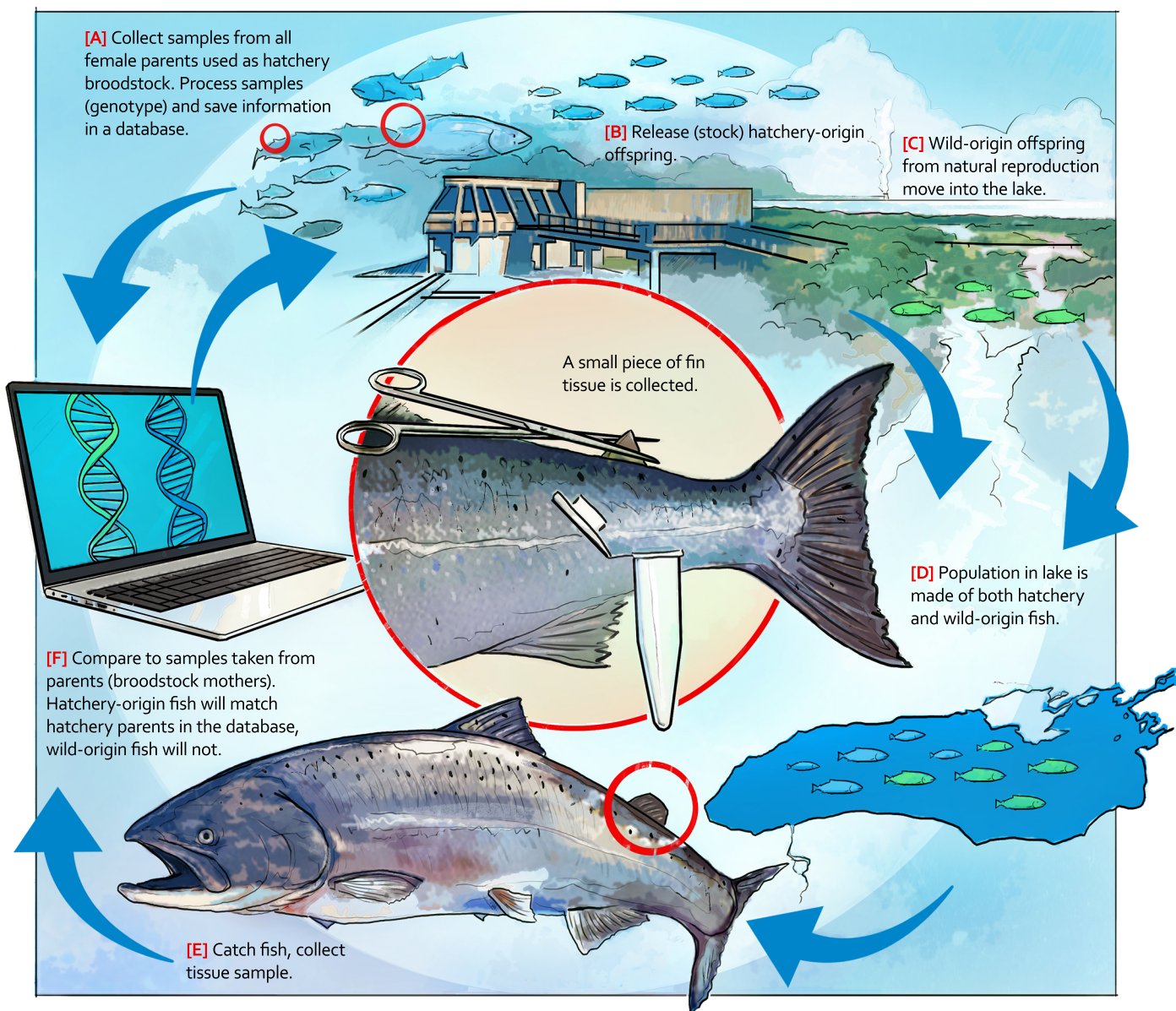


Implementing a New Genetic Approach

Identifying Hatchery & Wild Origin Fish

With Parentage Based Tagging



Parentage based tagging is a new genetic technique being used to identify hatchery and wild-origin Chinook salmon in Lake Ontario. Understanding the proportion of hatchery and wild fish that make up a population is extremely important for fisheries managers. This information is used to keep the amount of predators in the lake, like trout and salmon, in balance with the amount of prey that is available for them to eat. This new genetic-based technique is more cost effective, quicker, and more accurate than previous methods used to estimate the total number of Chinook salmon in Lake Ontario.